

PRODUCT BOOKLET

<u>easygroove</u>	<u>2</u>	<u>easyvj</u>	<u>3</u>
<u>easyascot</u>	<u>4</u>	<u>easyregency</u>	<u>5</u>
<u>easypanel</u>	<u>6</u>	<u>easyline</u>	<u>7</u>
<u>easydado</u>	<u>8</u>	<u>easyclad</u>	<u>9</u>
<u>easybeaded</u>	<u>10</u>	<u>easyvener</u>	<u>11</u>
		<u>easyscreen</u>	<u>12-14</u>

**COMPLIMENTARY PRODUCTS
& PANEL FINISHING..... 15-16**

**PRODUCT
INFO..... 17**

**INSTALLATION
INFO..... 18**

**WHY CHOOSE
EASYCRAFT 19**



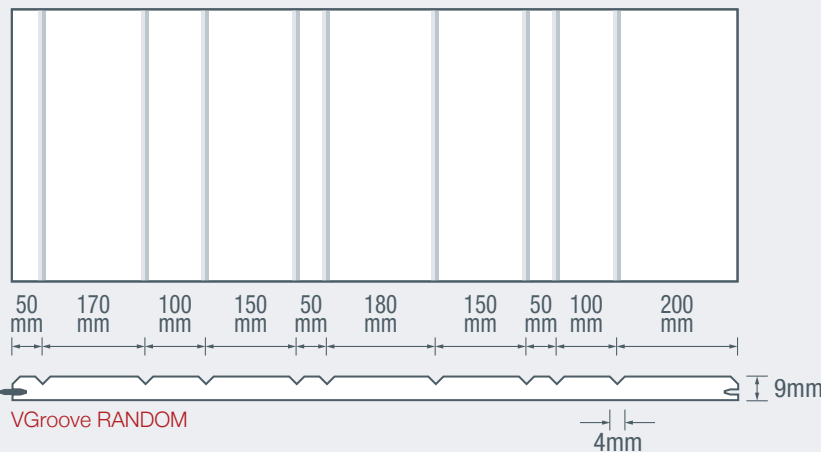
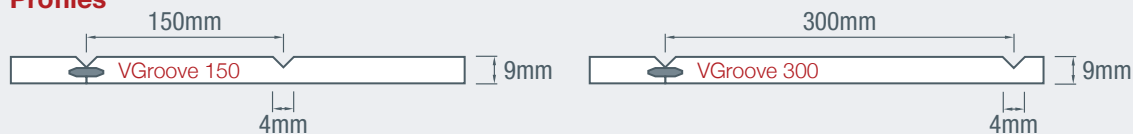
stylish solutions for walls and ceilings

easygroove presents as a modern, open profile and is available in 3 optional centre width spacings. The panels not only look great but provide the tough surface finish of MDF and incorporate the hidden tongue and groove joining system. **Note:** easygroove centre spacing can be custom made to suit application. Minimum quantities will apply.

Specifications

Thickness	Length	Width	Weight (6.7kg/m ²)	Finish
9mm (Other thickness available on request)	2400mm	1200mm	19.3kg/sheet	Pre-primed
	3000mm	1200mm	24.2kg/sheet	Pre-primed
	3600mm (Made to Order)	1200mm	29.0kg/sheet	Pre-primed

Profiles



- Manufactured from 9mm MDF MR – E0 rated board
- Pre-undercoated finish requires minimal preparation before final painting
- Sizes are nominal and can vary slightly in width and length
- Impact resistant – save on ongoing maintenance and repairs
- *Easyjoin* system – no joint sealing required, up to 5% better material usage
- Consistent board face – no knot holes, splitting, warping or splinters
- Easier and faster to install than timber planks or plasterboard

Suitable for

- Internal wall and ceiling linings
- Can be applied directly over plasterboard walls
- Special groove spacing available – made to order

Note: **easygroove** MDF must not be directly subjected to water. If being installed into a wet area refer to Guidelines for Installing Easycraft Wall Linings in Bathrooms, Laundries and Kitchens on our website. We recommend **easyclad** as the best suited base board for wet room applications.

See Page 17 for more **PRODUCT INFORMATION** [\(CLICK HERE\)](#)

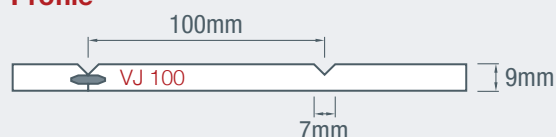
See Page 18 for **INSTALLATION INFORMATION** [\(CLICK HERE\)](#)

easyvj is our most popular wall and ceiling feature panel being used in both traditional and newly built homes. It will give living spaces a truly unique and contemporary feel. Can be used vertically, horizontally or diagonally as a feature wall, at dado rail height and even on ceilings.

Specifications

Thickness	Length	Width	Weight (6.7kg/m ²)	Finish
9mm (Other thickness available on request)	900mm	1200mm	7.3kg/sheet	Pre-primed
	2400mm	1200mm	19.3kg/sheet	Pre-primed
	2700mm	1200mm	21.7kg/sheet	Pre-primed
	3000mm	1200mm	24.2kg/sheet	Pre-primed
	3600mm	1200mm	29.0kg/sheet	Pre-primed

Profile



- Manufactured from 9mm MDF MR – E0 rated board
- Pre-undercoated finish requires minimal preparation before final painting
- Sizes are nominal and can vary slightly in width and length
- Impact resistant – saving on future maintenance and repairs
- *Easyjoin* system – no joint sealing required, better material usage
- Consistent board face – no knot holes, splitting, warping or splinters
- Easier and faster to install than timber planks or plasterboard

Suitable for

- Internal wall and ceiling linings
- Can be applied directly over plasterboard walls
- Above Dado Rail height – Add **easypanel** for a complimentary smooth wall finish above
- Great alternative to traditional plasterboard finish
- Special groove spacing available – made to order

Note: **easyvj** MDF must not be directly subjected to water. If being installed into a wet area refer to Guidelines for Installing Easycraft Wall Linings in Bathrooms, Laundries and Kitchens on our website. We recommend **easyclad** as the best suited base board for wet room applications.

See Page 17 for more **PRODUCT INFORMATION** [\(CLICK HERE\)](#)

See Page 18 for **INSTALLATION INFORMATION** [\(CLICK HERE\)](#)

The classic **easyascot** is perfect for that special room, adding an elegant touch. Combined with an **easydado** rail and **easypanel**, the look is luxury all the way. Comes pre-primed both sides with industrial grade undercoat for easy final coat application.

Specifications

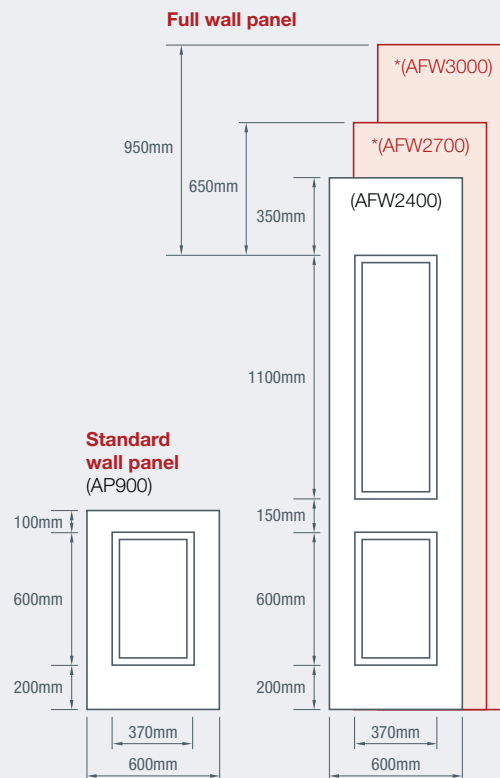
Thickness	Ascot Panel Type	Length	Width	Weight (6.7kg/m ²)	Finish
9mm	AP900 – Standard Wall Panel	900mm	600mm	3.6kg/sheet	Pre-primed - both sides
	AWF2400 – Full Wall Panel (Made to Order)	2400mm	600mm	9.6kg/sheet	Pre-primed - both sides

***Note:** Full Wall Ascot also available (made to order) in 2700mm (AFW2700) & 3000mm (AFW3000) height. Profile sizing remain as per 2400mm (AFW2400) panel.

Profiles



- Ascot Dado Wall Panel (AP900) 900mm x 600mm x 9mm
- Ascot Full Wall Panels (AFW2400) excellent for feature walls, hallways etc. 2400mm x 600mm x 9mm
- Pre-primed requiring minimal preparation for final coat finishing
- Pre-primed reversible back (no profile) to use as end fill for gaps less than 600mm
- Sizes are nominal and can vary slightly in width and length
- Impact resistant – saving on future maintenance and repairs
- *Easyjoin* system – no joint sealing required, better material usage



Suitable for

- Internal feature walls complimented with **easydado** top rail
- Can be applied directly over plasterboard walls
- Great alternative to traditional plaster and joinery panel styles

Note: **easyascot** MDF must not be directly subjected to water. If being installed into a wet area refer to Guidelines for Installing Easycraft Wall Linings in Bathrooms, Laundries and Kitchens on our website. We recommend **easyclad** as the best suited base board for wet room applications.

See Page 17 for more **PRODUCT INFORMATION** [\(CLICK HERE\)](#)

See Page 18 for **INSTALLATION INFORMATION** [\(CLICK HERE\)](#)

easyregency looks fantastic in the traditional home or as a feature in a contemporary home. This design will enhance any hallway, bedroom or dining room wall as a dado height or full length wall.

Specifications

Thickness	Length	Width	Weight (6.7kg/m ²)	Finish
9mm (Other thickness available on request)	900mm	1200mm	7.3kg/sheet	Pre-primed
	2400mm	1200mm	19.3kg/sheet	Pre-primed
	3000mm	1200mm	24.1kg/sheet	Pre-primed
	3600mm	1200mm	29.0kg/sheet	Pre-primed

Profile



Note: Regency profile is set at 150mm centres. There are no other centre spacing options available.

- Manufactured from 9mm MDF MR – E0 rated board
- Pre-undercoated finish requires minimal preparation before final painting
- Sizes are nominal and can vary slightly in width and length
- Impact resistant – saving on future maintenance and repairs
- Easyjoin system – no joint sealing required, better material usage
- Consistent board face – no knot holes, splitting, warping or splinters
- Easier and faster to install than timber planks or plasterboard

Suitable for

- Internal wall and ceiling linings
- Can be applied directly over plasterboard walls
- Above Dado Rail height – add **easypanel** for a complimentary smooth wall finish above

Note: **easyregency** MDF must not be directly subjected to water. If being installed into a wet area refer to Guidelines for Installing Easycraft Wall Linings in Bathrooms, Laundries and Kitchens on our website. We recommend **easyclad** as the best suited base board for wet room applications.

See Page 17 for more **PRODUCT INFORMATION** [\(CLICK HERE\)](#)

See Page 18 for **INSTALLATION INFORMATION** [\(CLICK HERE\)](#)

easypanel is the ideal alternative to plasterboard offering a smooth, tough impact resistant surface. It is perfect for those high traffic family areas or media rooms where noise may be an issue. It can also be used in garages and storage areas for added strength and hanging support.

Specifications

Thickness	Length	Width	Weight (6.7kg/m ²)	Finish
9mm (other thickness available on request)	2400mm	1200mm	19.3kg/sheet	Pre-primed
	3000mm	1200mm	21.7kg/sheet	Pre-primed
	3600mm	1200mm	29.0kg/sheet	Pre-primed

Profile



- A smooth face with a micro-arised edge detail shows the joint as a feature
- Manufactured from 9mm MDF MR – E0 rated board
- Pre-undercoated finish requires minimal preparation before final painting
- Sizes are nominal and can vary slightly in width and length
- Impact resistant – saving on future maintenance and repairs
- *Easyjoin* system – no joint sealing required, better material usage
- Consistent board face – no knot holes, splitting, warping or splinters
- Easier and faster to install than timber planks or plasterboard

Suitable for

- Internal wall and ceiling linings
- Above Dado Rail – grooved feature wall panelling
- Alternative to plasterboard in areas of high traffic, impact and/or where additional surface density is required

Note: **easyline** MDF must not be directly subjected to water. If being installed into a wet area refer to Guidelines for Installing Easycraft Wall Linings in Bathrooms, Laundries and Kitchens on our website. We recommend **easyclad** as the best suited base board for wet room applications.

See Page 17 for more **PRODUCT INFORMATION** [\(CLICK HERE\)](#)

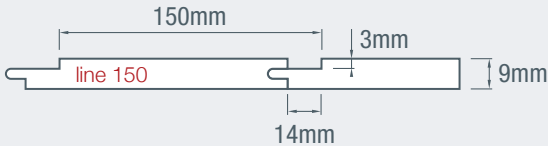
See Page 18 for **INSTALLATION INFORMATION** [\(CLICK HERE\)](#)

The **easyline** design reflects the classic look of shiplap timber cladding and comes in a 1200mm panel width, eliminating those annoying joints throughout. The panels include the easy to use Tongue and Groove joining system allowing a quick and easy installation process.

Specifications

Thickness	Length	Width	Weight (6.7kg/m ²)	Finish
9mm	2400mm	1200mm	19.3kg/sheet	Pre-primed
	3000mm	1200mm	21.7kg/sheet	Pre-primed
	3600mm	1200mm	29.0kg/sheet	Pre-primed

Profile



- Manufactured from 9mm MDF MR – E0 rated board
- Pre-undercoated finish requires minimal preparation before final painting
- Sizes are nominal and can vary slightly in width and length
- Impact resistant – saving on future maintenance and repairs
- Easy to use Tongue and Groove joining system
- Consistent board face – no knot holes, splitting, warping or splinters
- Easier and faster to install than timber planks or plasterboard

Suitable for

- Internal wall and ceiling linings
- Can be applied directly over plasterboard walls
- Great alternative to traditional plasterboard finish

Note: **easyline** MDF must not be directly subjected to water. If being installed into a wet area refer to Guidelines for Installing Easycraft Wall Linings in Bathrooms, Laundries and Kitchens on our website. We recommend **easyclad** as the best suited base board for wet room applications.

See Page 17 for more **PRODUCT INFORMATION** [\(CLICK HERE\)](#)

See Page 18 for **INSTALLATION INFORMATION** [\(CLICK HERE\)](#)

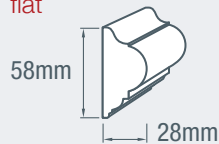
easydado is designed to provide the perfect finish to 900mm dado wall height installations, whether using easyvj, easyregency or easyascot. Available in flat or rebate profiles to suit your project.

Specifications

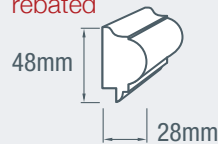
Profile	Length	Width	Weight	Finish
Rebated	3600mm	48mm x 28mm	3.4kg/length	Pre-primed
Flat	3600mm	58mm x 28mm	3.4kg/length	Pre-primed

Profiles

easydado flat



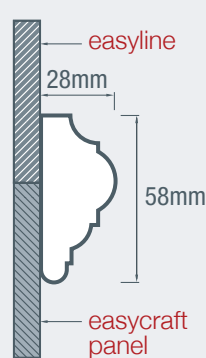
easydado rebated



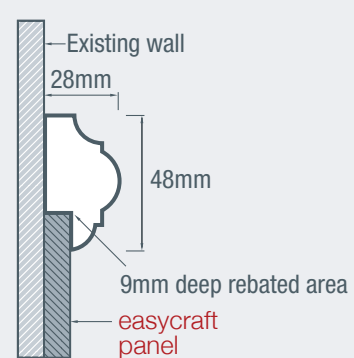
- Manufactured from Clear Pine
- Pre-undercoated finish requires minimal preparation before final painting
- Two profiles available – Rebated and Flat
- Straight and true moulding rail
- Rebated to suit 9mm Easycraft panels

Installed profile - cross section

easydado flat



easydado rebated



Suitable for

- **easydado rebated** for a professional finish to the join between the dado wall panels and existing wall lining
- **easydado flat** for use as a decorative dado rail or picture hanging rail feature

Note: easydado must not be directly subjected to water. If being installed into a wet area refer to Guidelines for Installing Easycraft Wall Linings in Bathrooms, Laundries and Kitchens on our website. We recommend **easyclad** as the best suited base board for wet room applications.

See Page 17 for more **PRODUCT INFORMATION** [\(CLICK HERE\)](#)

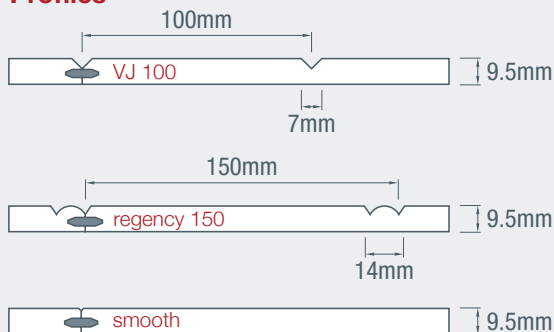
See Page 18 for **INSTALLATION INFORMATION** [\(CLICK HERE\)](#)

easyclad is recommended for use in high moisture areas (bathrooms) and semi-external (undercover) applications. It is made from 9.5mm reconstituted hardwood, has excellent environmental credentials and comes pre-primed on both sides with a commercial grade undercoat. It is available in smooth, VJ and regency profiles.

Specifications

Thickness	Length	Width	Weight (10.7kg/m ²)	Finish
9.5mm	2745mm	1200mm	32.9kg/sheet	Pre-primed
	3660mm	1200mm	43.9kg/sheet	Pre-primed

Profiles



- Available in various patterns – VJ (stocked), Regency (made to order) & Smooth (made to order)
- Manufactured from 9.5mm Hardboard – contains no glues or resins
- Pre-undercoated finish on both sides requires minimal preparation before final painting
- Sizes are nominal and can vary slightly in width and length
- Impact resistant – saving on future maintenance and repairs
- *Easyjoin* system – no joint sealing required, better material usage
- Consistent board face – no knot holes, splitting, warping or splinters
- Easier and faster to install than timber planks or plasterboard

Suitable for

- Internal wall and ceiling linings
- Semi-external wall or ceiling linings undercover of roof or verandah
- Soffit linings

Note: easyclad is not suitable for fully exposed external applications or directly subjected to water. If being installed into a wet area refer to Guidelines for Installing Easycraft Wall Linings in Bathrooms, Laundries and Kitchens on our website.

See Page 17 for more **PRODUCT INFORMATION** [\(CLICK HERE\)](#)

See Page 18 for **INSTALLATION INFORMATION** [\(CLICK HERE\)](#)

The traditional profile of **easybeaded** matches many classic, older style wall coverings. It also delivers a softer option to the regency and VJ profiles in a modern application having a narrower profile.

Specifications

Thickness	Length	Width	Weight (6.7 kg/m ²)	Finish
9mm	2400mm (Made to Order)	1200mm	19.3kg/sheet	Pre-primed
	3000mm (Made to Order)	1200mm	21.7kg/sheet	Pre-primed
	3600mm (Made to Order)	1200mm	29.0kg/sheet	Pre-primed

Profile



Note: There are other centre spacing options available. Ranging from 63mm to 140mm.

- Manufactured from 9mm MDF MR – E0 rated board
- Pre-undercoated finish requires minimal preparation before final painting
- Sizes are nominal and can vary slightly in width and length
- Impact resistant – saving on future maintenance and repairs
- *Easyjoin* system – no joint sealing required, better material usage
- Consistent board face – no knot holes, splitting, warping or splinters
- Easier and faster to install than timber planks or plasterboard

Suitable for

- Internal wall and ceiling linings
- Above Dado Rail height – mixed with easyascot or other wall panels
- Alternative to plasterboard in areas of high traffic, impact and/or where additional strength is required

Note: **easybeaded** MDF must not be directly subjected to water. If being installed into a wet area refer to Guidelines for Installing Easycraft Wall Linings in Bathrooms, Laundries and Kitchens on our website. We recommend **easyclad** as the best suited base board for wet room applications.

See Page 17 for more **PRODUCT INFORMATION** [\(CLICK HERE\)](#)

See Page 18 for **INSTALLATION INFORMATION** [\(CLICK HERE\)](#)

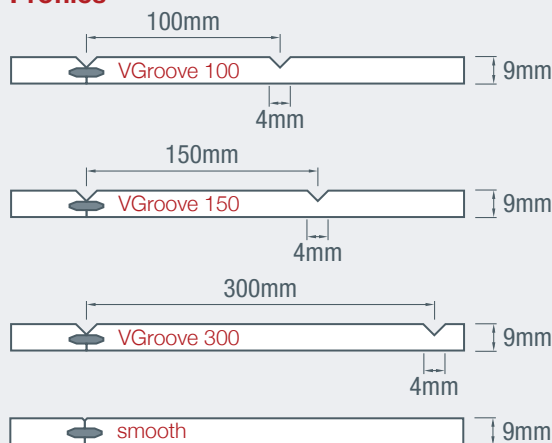
easyveneer will save you time and money when wanting to create feature timber walls or ceilings. No knots or the inconsistent quality of timber boards. This is the latest in modern timber veneer finishes available in smooth and VG (narrow VGroove) profiles.

Specifications

Material	Thickness	Length	Width	Weight (6.7 kg/m ²)	Finish
Hoop Ply	9mm & 12mm	2400mm	1200mm	19.3kg/sheet (9mm)	Raw or Lacquered*
Tas Oak	9mm & 12mm	2400mm	1200mm	19.3kg/sheet (9mm)	Raw or Lacquered*

*Lacquer finish is additional cost. **Profile type and centres to be confirmed on order.

Profiles



- Available in various centres, 100mm, 150mm & 300mm
- Tasmanian Oak veneer face on MDF base with lower grade on back (veneer can vary)
- Hoop Pine ply in AC & BB grades and 9mm & 12mm
- Ready for onsite varnish/staining or can be supplied clear lacquered ex factory
- Sizes are nominal and can vary slightly in width and length
- *Easyjoin* system – no joint sealing required, better material usage
- Consistent board face – no knot holes, splitting, warping or splinters
- Easier and faster to install than timber planks or plasterboard

Suitable for

- Internal wall and ceiling linings
- Semi-external (covered) ceilings
- A protective coating or stain must be applied for semi-external applications
- Special groove spacings are available on request - made to order

Note: **easyveneer** MDF must not be directly subjected to water. If being installed into a wet area refer to Guidelines for Installing Easycraft Wall Linings in Bathrooms, Laundries and Kitchens on our website. We recommend **easyclad** as the best suited base board for wet room applications.

See Page 17 for more **PRODUCT INFORMATION** [\(CLICK HERE\)](#)

See Page 18 for **INSTALLATION INFORMATION** [\(CLICK HERE\)](#)

The Mini range of decorative screens are perfect when wanting a unique look to finish off a feature wall or entrance area. The use of multiple panels, both vertically and horizontally are an easy way of producing a creative visual impact. The Mini range are great for smaller feature partitioning or simply used as wall art décor. And they come pre-primed ready to paint so you can add your own final finish to compliment your overall colour pallet.

Specifications - Mini

Material	Thickness	Use	Length	Width	Weight	Finish
MDF MR	12mm	Interior	1200mm	600mm	5kg/sheet	Pre-primed
Hardboard	9.5mm	Semi-exterior	1200mm	600mm	8kg/sheet	Pre-primed

* Weight/sheet is an approximate based on panel area less perforation

Profiles

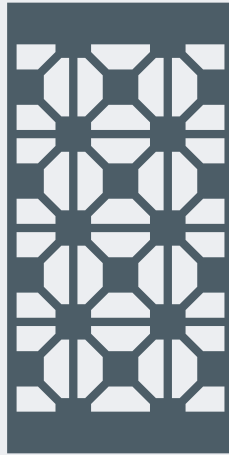
Halo Mini



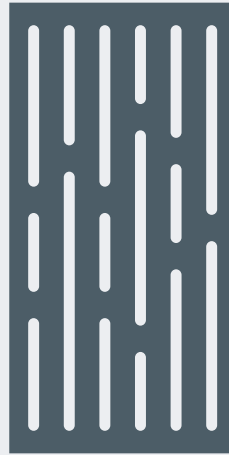
Nature Mini



Retro Mini



Studio Mini



- All products are **MADE TO ORDER** and cannot be returned for any reason
- All screens come with a primer coat to both sides ready for final coat finish
- Board sizes are nominal and can vary (slightly) in width and length
- Any framing used for mounting purposes must be straight and true
- If hanging screens ensure your support structure is sufficient to handle the total combined screen weight
- Screens are heavy so please ensure you have sufficient people and/or equipment available when installing
- The base board material can be susceptible to bowing in some climatic conditions
- No installation fittings or hanging accessories are provided with screens. To be purchased separately

Suitable for

- Unique look to finish off a feature wall or entrance area
- Use of multiple panels, both vertically and horizontally are an easy way of producing a creative visual impact
- Smaller feature partitioning or simply used as wall art décor

See page 14 for **EASYSCREEN INSTALLATION EXAMPLE** [\(CLICK HERE\)](#)

See Page 17 for more **PRODUCT INFORMATION** [\(CLICK HERE\)](#)

See Page 18 for **INSTALLATION INFORMATION** [\(CLICK HERE\)](#)

easycraft's decorative and privacy screening is ideal for use in commercial and residential applications. They are suitable for use in undercover areas such as patios and pergolas, providing a unique backdrop to a BBQ area or to create personal private spaces of use around the home or office.

Specifications - Standard

Material	Thickness	Use	Length	Width	Weight	Finish
MDF MR	12mm	Interior	2720mm	1214mm	28kg/sheet	Pre-primed
Hardboard	9.5mm	Semi-exterior	2745mm	1218mm	28kg/sheet	Pre-primed

* Weight/sheet is an approximate based on panel area less perforation

Profiles

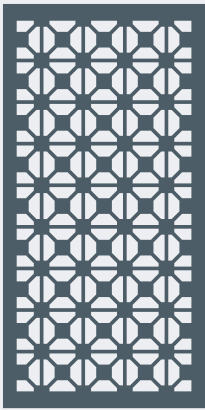
Halo Standard



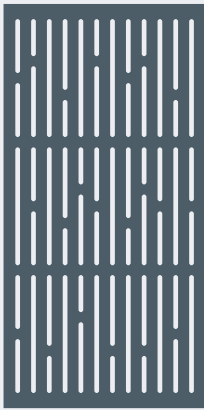
Nature Standard



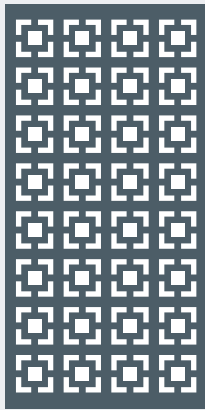
Retro Standard



Studio Standard



Cube Standard



- All products are **MADE TO ORDER** and cannot be returned for any reason
- All screens come with a primer coat to both sides ready for final coat finish
- Board sizes are nominal and can vary (slightly) in width and length
- Any framing used for mounting purposes must be straight and true
- If hanging screens ensure your support structure is sufficient to handle the total combined screen weight
- Screens are heavy so please ensure you have sufficient people and/or equipment available when installing
- The base board material can be susceptible to bowing in some climatic conditions
- No installation fittings or hanging accessories are provided with screens. To be purchased separately
- Images shown are representative only, top and bottom border will be larger on actual sheet, allowing for trimming

Suitable for

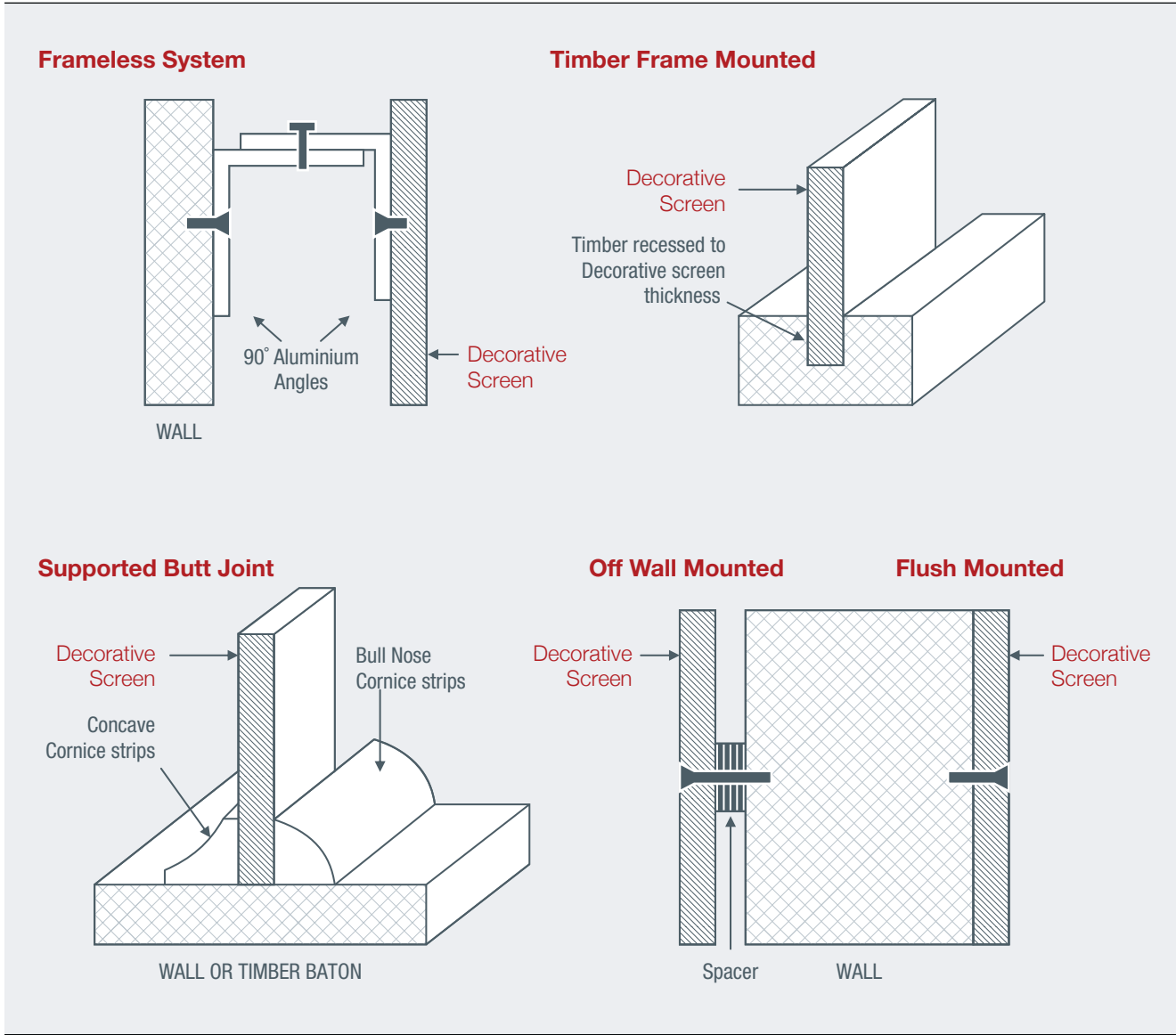
- Privacy Screening in interior Commercial and Residential Applications
- Undercover areas such as patios and pergolas
- Unique backdrop to a BBQ area
- Personal private spaces around the home or office

See page 14 for **EASYSCREEN INSTALLATION EXAMPLE** [\(CLICK HERE\)](#)

See Page 17 for more **PRODUCT INFORMATION** [\(CLICK HERE\)](#)

See Page 18 for **INSTALLATION INFORMATION** [\(CLICK HERE\)](#)

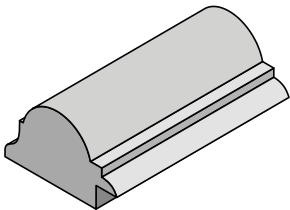
Note: No installation fittings or hanging accessories are provided with screens. To be purchased separately.



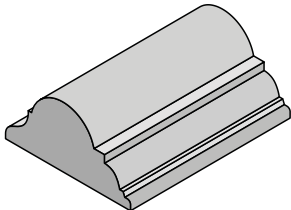
Easycraft has a policy of continuous product testing and improvement. For this reason we reserve the right to make any changes or modifications to the information contained in this document as we consider necessary and without notice. (updated July 2016. E&OE). Screen designs can be applied to a varying range of base board materials and produced as a Special Made to Order Product. Additional pricing and lead time will apply. Please enquire via your local Reseller.

Products to compliment Easycraft Wall and Ceiling panels

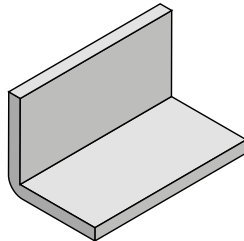
Below is a list of readily available products found within the market place that compliment and provide options when dressing up or down Easycraft range of panels.



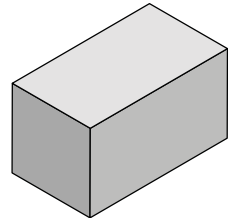
easydado - Rebated



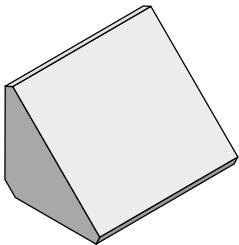
easydado - Flat



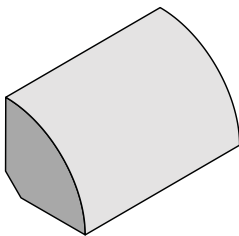
External Corner



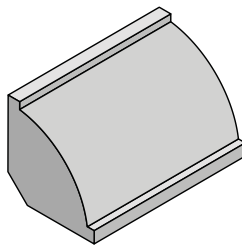
Stops DAR



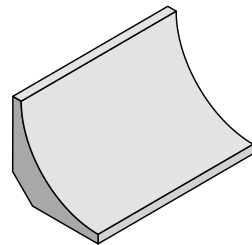
Tri-Quad Corner Moulding



Quad Corner Moulding

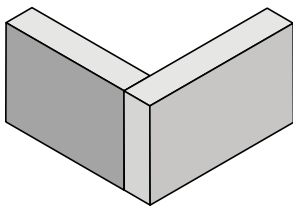


Ovolo Corner Moulding

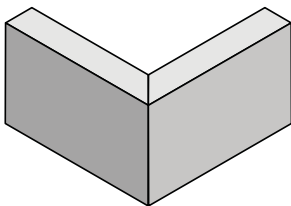


Scotia Corner Moulding

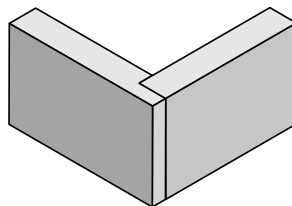
Finishing Suggestions



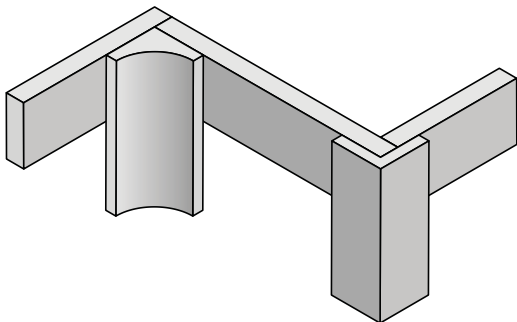
Butt



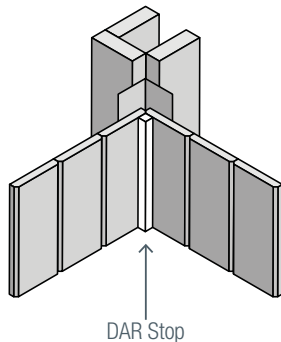
Mitre



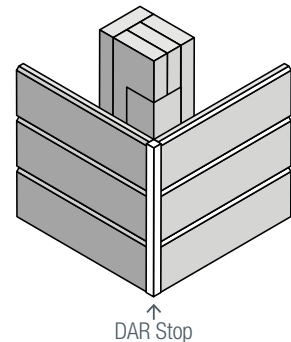
Rebated



Internal and external corner moulding



Internal and external corners using DAR Stops



Alternative Finishing Suggestions

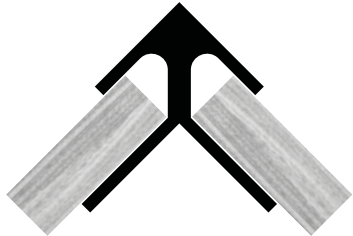
End to End Option

Expansion Joint
Batex – Expansion Joint

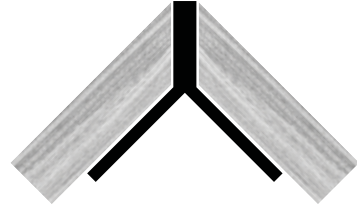


Corners & End Options

External Corner
Batex – BEC



Decorative Y Section
Batex – BDY



Corner Angle
Batex – SSCA



Half Round Corner Angle
Batex – SSHRT



Angle
Batex – AA



Angle
Batex – SSA



Visit easycraft.com.au for videos on how to install easycraft wall panels

General Product Information

- Product should be delivered to site 48 hours prior to installation to allow it to acclimatise.
- The framing must be straight and true.
- For wall and/or ceiling applications studs should be spaced at 450mm centres or less.
- Fixings should be positioned no closer than 25mm to a corner and no closer than 15mm to the edge. This positioning will prevent splintering and breakout.
- A 10mm gap must be left at the floor if the wall lining is being installed only part way up the wall.
- A 10mm gap must be left at the floor as well as the top of the sheet if the wall lining is being installed from floor to ceiling.
- A 1.0mm expansion gap should be allowed at each join.
- For each metre width of wall or ceiling, allow approx. 1.5mm for an expansion gap at the outer perimeters of your wall or ceiling. (e.g. 6m wall x 1.5mm = 9mm therefore leave a 4.5mm gap at each outer edge of wall or ceiling)
- Easycraft wall linings can be joined off the studs but these joins must be supported by a noggin at 700mm maximum spacing.
- Decide how you wish to finish off internal and external corners before you install the first sheet.
- Where an internal wall lining is backing onto an external wall the back surface of the wall lining should also be undercoated.
- When installed as a ceiling lining the back of the sheet should be undercoated prior to installation. We recommend for ceiling applications that you DO NOT end butt sheets due to the potential for ongoing movement. MDF is a timber based product and will have some movement based on climatic conditions.
- In extreme high humidity areas or extreme dry areas there can be substantial movement of boards, so it is not recommended for general use in these areas. See more detailed information on our website product pages.

These are recommendations only. Always consult with a local Registered Builder experienced in the use of these types of products and to ensure you comply with all relevant building regulations. We take no responsibility for any movement of product once it has been installed.

Safety

- Easycraft products are manufactured from wood products. Accordingly, machine tools should be fitted with dust extractors and operators should wear a dust mask and eye protection. Further information is contained in the respective product Material safety Data Sheets (MSDS) available on our web site.

Visit easycraft.com.au for more product information

Tools and Equipment Required

- Tape Measure
- Hand Saw or Power Saw
- Hammer / Nail Gun or Screw Gun
- Pencil
- Spirit Level
- String Line
- Caulking Cartridge Gun or Spatula
- P1 or P2 Dust Mask
- Safety Glasses (complying with AS1337)

Easycraft Wall Linings can be easily cut with a Power Saw or Hand Saw. When using a Power Saw, cut the board with the face side down. When using a Hand Saw, cut the board with the face side up.

Consumables

The following is a list of products that are suggested will perform in typical product applications.

• Nails

Must be long enough to penetrate the studs at least 30mm.

Fixing wall linings:

- Hammer – use 2mm x 40mm anti-rust bullet head nail
- Nail Gun – use Paslode ND Brads 14ga x 45mm

Fixing ceiling linings:

- Nail Gun – use Paslode Duo-Fast C2.5 x 45 Ring Shank

If installing with power tools ensure the driving pressure is only sufficient to drive the head marginally below the surface. If the driving pressure is too high and the nail is driven in too far, splitting of the board could occur and tool marks will show.

• Screws

Fixing into timber frame:

ICCONS: Needle point CSK head (part No. TP796)

- 8 -15 x 20 or 30mm

ICCONS: Collated

- Needle point CSK head collated (IC Find # 796C or 798C)
- 8 -15 x 20 or 30mm

Fixing into steel frame:

ICCONS: Self-Drilling CSK head Self embed head (part No. TP326)

- 8 -18 x 20 or 30mm

ICCONS: Collated

- Self-Drilling CSK head Self embed head collated (IC Find # 344C or 346C)
- 8 -15 x 20 or 30mm

• Glues

A flexible construction adhesive or stud adhesive should be used for fixing the sheets to the studs and noggins.

• Miscellaneous

- Spacers – use off cuts of the 9mm MDF or 10mm timber pieces.
- PVA adhesive for glueing corners together and mouldings in place.
- Best to use a Timber based filler to fill nail or screw holes.

Technical information and suggestions for use and application have been collated within the Easycraft web site. Please refer to our “How to Guides” for information and suggestions for:

- Guideline For Fixing Easycraft Wall Linings to To New Timber Frames in Bathrooms, Laundries and Kitchens (Wet Area's)
- Guideline For Fixing Easycraft Panels To New Timber Frames
- Guideline For Fixing Easycraft Panels To Steel Frames
- Guidelines For Fixing EasyAscot To New Timber Frames
- Guidelines For Fixing Easycraft Panels In Ceiling Applications
- Guidelines For Fixing Easycraft Panels In Wall Applications
 - Dado Wall Panelling
 - Horizontal Join fixing
 - External Corner; Butt join
 - External Corner; Mitre join
 - External Corner; Timber Moulding
 - Fixing Ceiling Linings to Battens
 - Fixing Over Existing Lining
 - Fixing Sheets to Brick/Block Walls
 - Fixing Sheets to Timber Frames
 - Fixing to Studs at 450mm Centres
 - Internal Corner: Butt Join Method
- Guidelines For Finishing
- Guidelines For Painting

Safety

- Easycraft products are manufactured from wood products. Accordingly, machine tools should be fitted with dust extractors and operators should wear a dust mask and eye protection. Further information is contained in the respective product Material safety Data Sheets (MSDS) available on our web site.

why choose easycraft



EASY TO INSTALL - either do it yourself or rest easy that just one tradesman can install your easycraft wall or ceiling feature from start to finish, utilising the easyjoin system, ensuring a strong, professional finish.

EASY ON THE EYE - in both contemporary and traditional design applications, easycraft looks superb, providing just enough profile to enhance any room.

EASY TO FINISH - easycraft MDF panels come fully pre-primed ready for the final coat application and you can use either water or oil based paint.

AUSTRALIAN OWNED AND MADE - using eco approved products sourced only from plantation timbers here in Australia.

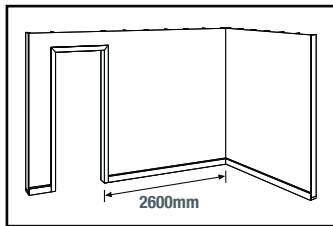
TOUGH AND IMPACT RESISTANT - made from a (MR) moisture resistant (MDF) medium density fibre board, it's ideal for those rooms that need to meet the day to day adventures of the whole family. Also great for garage and storage area walls, making hanging things easy.

NEW WALL BUILDING OR RENOVATING APPLICATIONS - easy to install over an existing wall or direct to frame for new building projects.

4 easy steps to bring your walls to life

DIY dado wall room makeover

1 CALCULATE WHAT YOU NEED

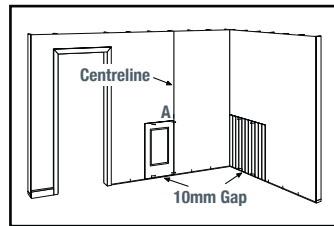


To work out how many panels you need, simply measure the wall width, divide it by the panel width then round it up. For a single panel of 1200mm wide and a 2600mm wall, you'll need 3 panels.

The panel widths vary.

VJ and Regency profile are 900mm high x 1200mm wide
Ascot is 900mm high x 600mm wide.

2 POSITION THE PANELS



The profile of the panel determines where to begin positioning. For Ascot panels (square profile) position from the centre. For an even number of panels, start with the first panel adjacent to the centreline (position **A**).

For an odd number, place the centre of the first panel on the centreline. For all other profiles you can start in the corner and work your way out to the final edge and cut to suit. Near corners, doorways or windows, measure the gap and cut panels to fit.

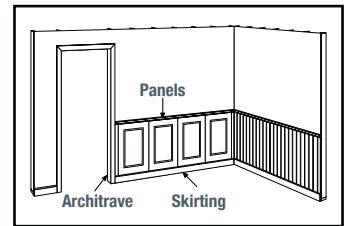
3 APPLY THE ADHESIVE AND FIT



Simply run a flexible adhesive down the walls allowing a 10mm gap from the floor to the base of the panel.

Attach the panels using the easy joining system and use nails top and bottom to hold it secure until the adhesive cures.

4 ADD SKIRTING AND TRIMS



When all the panels are fitted, reattach the skirting boards, add architraves and dado rails as required. You can now finish with your final coat of paint, and sit back and admire your brand new room.



Easycraft Australia Pty Ltd

140 North Road, Wynnum West QLD 4178

Phone: 07 3906 7200

Email: support@easycraft.com.au

easycraft.com.au

